

DEEP BED FILTRATION: MODELLING THEORY AND PRACTICE

G. Keir and V. Jegatheesan

School of Engineering, James Cook University, Australia

S. Vigneswaran

Faculty of Engineering, University of Technology, Sydney, Australia

Keywords: filtration, water treatment, porous media, initial stage, transient stage, filter ripening, breakthrough, filtration models.

Contents

1. Introduction
 - 1.1. Conditions of Deep Bed Filtration
 - 1.2. Stages of Deep Bed Filtration
 - 1.3. Transport Mechanisms
 - 1.3.1. Interception
 - 1.3.2. Inertial Impaction
 - 1.3.3. Sedimentation
 - 1.3.4. Diffusion
 - 1.3.5. Hydrodynamic Action
 - 1.3.6. Straining
 - 1.4. Attachment Mechanisms
 - 1.4.1. Long-Range Forces
 - 1.4.2. Short-Range Forces
 - 1.4.3. Presence of Primary and Secondary Minima
 - 1.4.4. Effect of Surface Blocking and Particle Size
 - 1.5. Detachment Mechanisms
 - 1.6. Modeling Approaches
 - 1.6.1. Microscopic Modeling
 - 1.6.2. Macroscopic Modeling
2. Mathematical Models for the Initial Filtration Stage
 - 2.1. Removal Efficiency
 - 2.2. Model Representation of Porous Media
 - 2.3. Classification of Microscopic Models
 - 2.4. Eulerian Methods (Convective Diffusion Analysis)
 - 2.4.1. Perfect-Sink Models
 - 2.4.2. Non-Penetration Models
 - 2.5. Lagrangian Methods (Trajectory Analysis)
 - 2.6. Semi-Empirical Formulations
 - 2.6.1. Correlations for the Collision Efficiency α
 - 2.6.2. Correlations for the Initial Collection Efficiency η_0
 - 2.7. Limitations of Initial Stage Models
3. Mathematical Models for the Transient Filtration Stage
 - 3.1. Macroscopic Models

- 3.1.1. Methods of Solution to Macroscopic Equations
- 3.2. Transient Stage Models
 - 3.2.1. Retained Particle Detachment Models
 - 3.2.2. Deposition Site Saturation Models
 - 3.2.3. Particle Blocking Models
 - 3.2.4. Surface Charge Models
- 3.3. Limitations of Macroscopic and Transient Stage Models
- 3.4. The Effect of Particle Size Distribution
- 4. Conclusion
- Glossary
- Bibliography
- Biographical Sketches

Summary

Deep bed filtration is a rapid and efficient method for removing small particles from liquids. Such dispersions of particles in liquids are common in a wide range of industries; of particular interest to the civil or environmental engineer are those found in water and wastewater treatment. The removal of particles by deep bed filtration involves a complex array of mechanisms, which can be broadly classified as transport mechanisms, attachment mechanisms, and detachment mechanisms. This article provides an overview of the conditions and stages under which deep bed filtration occurs, and presents a summary of the mechanisms which govern the filtration process.

1. Introduction

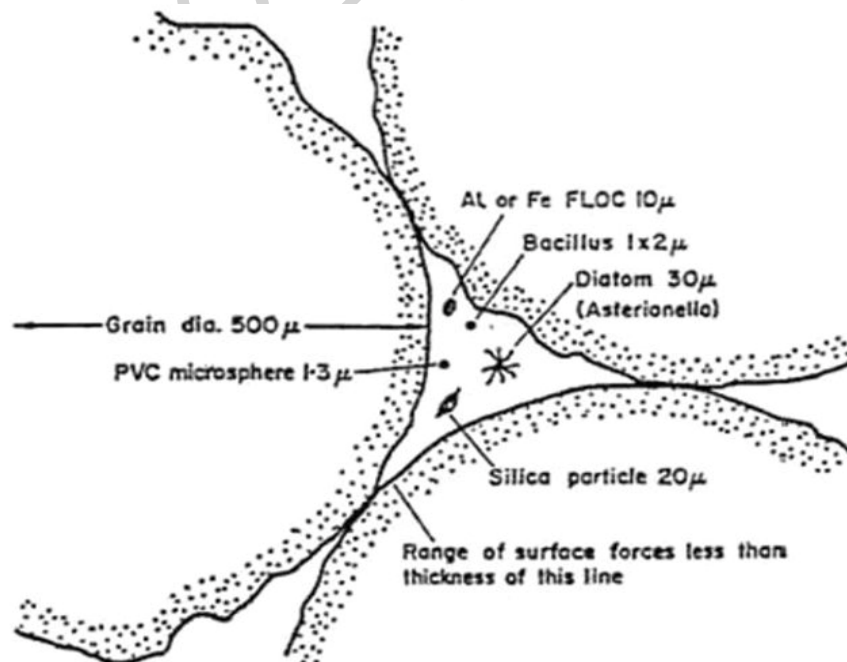


Figure 1. Typical dimensions of particles and filter grains in aqueous deep-bed filtration (Ives, K. J. (1970) Rapid filtration. *Water Research*, 4, 201-223).

In deep bed filtration, particles are removed when passed through beds of granular or fibrous filter material. Deep bed filtration differs from other kinds of filtration in that the solid particles suspended in the fluid are generally smaller than the pores of the filter medium, as shown in Figure 1.

As the suspension travels through the filter, the particles deposit at differing depths on the filter grains which constitute the bed. In engineering practice, deep bed filtration usually is used to treat raw water after the processes of coagulation, flocculation and sedimentation.

1.1. Conditions of Deep Bed Filtration

The surface charge of suspended particles and filter grains is important in deep-bed filtration. So-called favorable conditions occur when particles and filter grains are of opposite charges so that the particles and filter grains undergo an attractive interaction.

Conversely, under unfavorable conditions repulsive interactions between particles and filter grains of like charge occur. In water or wastewater treatment, conditions are predominantly unfavorable due to the negative surface charge of both the filter media and the suspended particles.

1.2. Stages of Deep Bed Filtration

The filtration process consists of two stages: the initial stage, and the transient stage. In the initial stage, particle deposition occurs onto a clean filter; that is, particles are directly deposited onto filter grains. This particle deposition has a negligible effect on the properties of the filter during the initial stage.

The transient stage occurs after the initial stage, and describes the remainder of the filtration process. Deposition occurs on filter grains which are already partially covered by deposited particles.

During this stage, the performance characteristics of the filter change dramatically: the particle removal can increase or decrease depending on the factors such as available surface area, collection by deposited particles or changes in interstitial (through pores) velocity. This means the performance of the filter changes substantially over the duration of a filter run.

The transient stage is often divided into three sub-stages; these are the ripening stage, working stage and breakthrough stage, as shown in Figure 2. The ripening stage is characterized by the improvement in filter effluent quality over time, or the decrease in the ratio of effluent concentration C to influent concentration C_0 . The working stage, in which particle removal remains essentially constant, generally follows the ripening stage. Finally, the break-through stage generally occurs in the latter part of filtration, where the filter efficiency decreases with time. It has been observed however that ripening and breakthrough can occur simultaneously in suspensions of varying particle size, as some particle sizes can show improvement while others deteriorate.

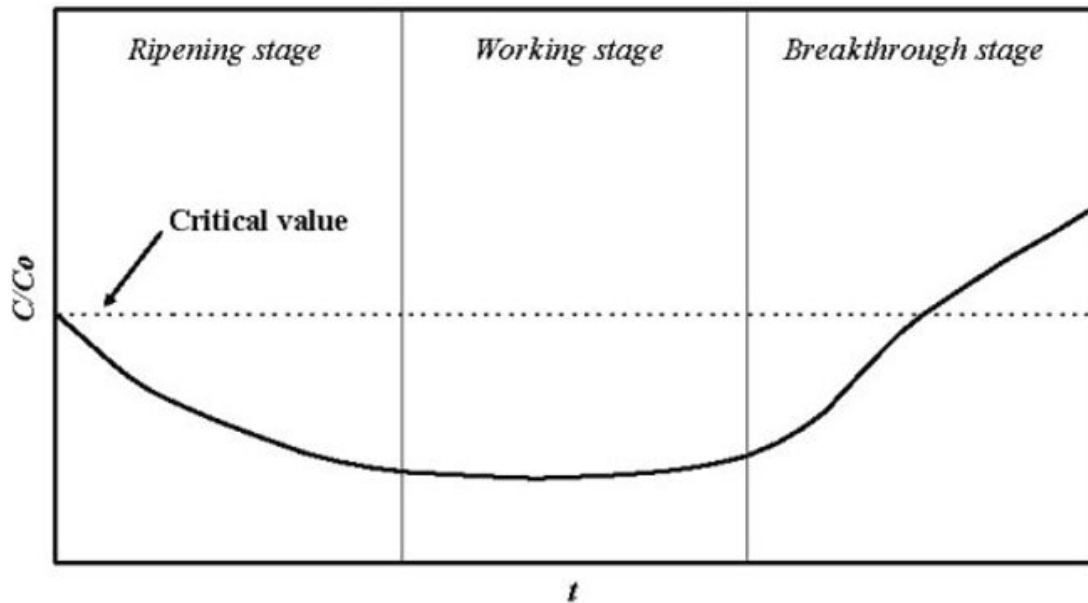


Figure 2. Typical curve showing filter performance over different stages of filtration.

1.3. Transport Mechanisms

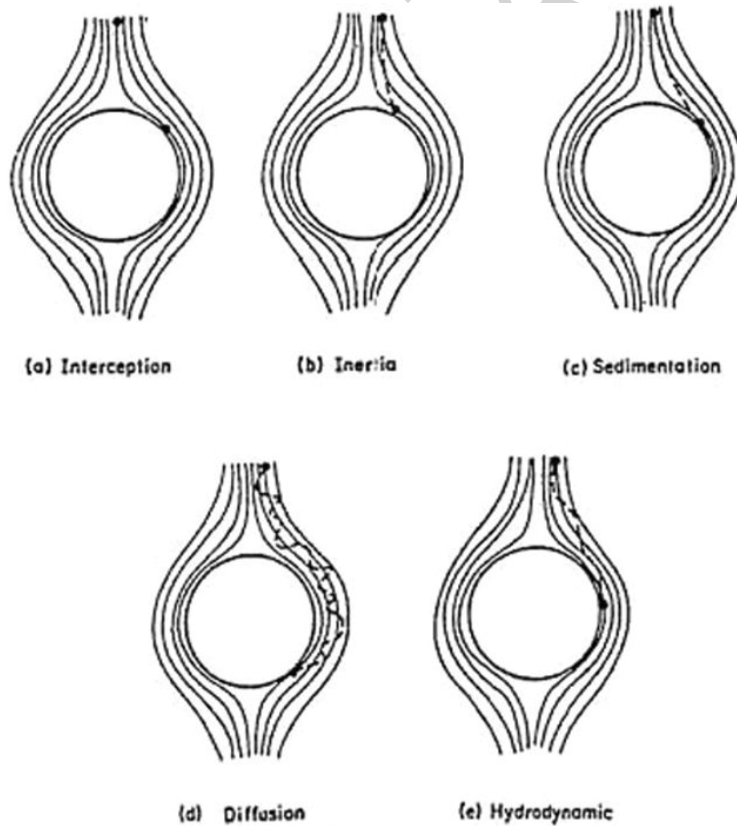


Figure 3. Schematic representation of the common transport mechanisms in deep-bed filtration (Ives, K. J. (1970) Rapid filtration. *Water Research*, 4, 201-223).

Before particles can be captured by filter grains, they must first be transported sufficiently near the grain surface so that surface forces can bind the particle to the grain. A range of transport mechanisms have been observed, and are outlined in the following, with schematic representations of the main mechanisms shown in Figure 3. It should be emphasized that these various mechanisms do not act in isolation; suspended particles will bear their effects to varying degrees depending on flow conditions, filter geometry, and the physicochemical properties of the particles.

1.3.1. Interception

The transport of particles by interception occurs due to the finite size of particles. Consider a particle in a fluid stream; if all forces on the particle are negligible, the particle shall follow the fluid streamlines. Interception occurs when the streamlines approach the filter grains to within a particle radius. The mechanism of interception is characterized by the dimensionless number N_R , which is the ratio of particle diameter d_p to grain diameter d_c .

1.3.2. Inertial Impaction

As fluid streamlines approach a filter grain, they must diverge as the flow passes around the grain. However, particles entrained in these streamlines, due to their inertia, do not change trajectories as the streamlines do. If the particle has sufficient inertia, it may follow a trajectory that will lead to collision with the filter grain surface. This inertial impaction is characterized by the dimensionless Stokes number, given by:

$$N_{st} = \frac{\rho_p d_p^2 U}{18\mu d_c} \quad (1)$$

where ρ_p is the density of the particle, U is the fluid approach velocity, and μ is the dynamic viscosity of the fluid.

1.3.3. Sedimentation

If the density of a particle is greater than that of the fluid it is suspended in, the particle will settle out of suspension in the direction of gravity. This mechanism is characterized by the gravitational parameter N_G , given by:

$$N_G = \frac{(\rho_p - \rho) d_p^2 g}{18\mu U} \quad (2)$$

where ρ is the fluid density and g is the acceleration due to gravity. This can be seen to be the ratio of the particle Stokes velocity to the fluid approach velocity U .

1.3.4. Diffusion

For very small particles, a random movement is observed due to the thermal vibrations

of the fluid molecules; this is termed Brownian diffusion. For particles of diameter $> 1 \mu\text{m}$, these effects are minimal due to viscous drag forces and torques exerted by the fluid. However, for particles of diameter $< 1 \mu\text{m}$ (submicron or Brownian particles), this effect becomes important, and increases with decreasing particle size. The mechanism of diffusion is characterized by the Peclet number, given by:

$$N_{Pe} = \frac{d_c U}{D} \quad (3)$$

where D is the Stokes-Einstein diffusion coefficient. The Peclet number represents the relative importance of diffusion and convection in a fluid flow; i.e. a low Peclet number characterizes a flow dominated by diffusive effects, and a high Peclet number characterizes a flow dominated by convective effects.

1.3.5. Hydrodynamic Action

In deep-bed filtration, flow through the filter bed is generally laminar with some velocity profile, and hence a shear field. For a uniform shear field and a spherical particle, rotation of the particle causes a swerving path across the shear field. For non-uniform shear field and aspherical particles (as is usually the case in practice), the particle is deflected in a similar, but unpredictable manner. The overall effect, termed hydrodynamic action, is of an apparently random drifting across the flow streamlines which may lead to contact with the filter grain surface. Efforts to characterize the importance of this effect via a suitable dimensionless number have so far been unsuccessful, due largely to the geometrical complexity of a typical filter pore arrangement.

1.3.6. Straining

When particles in suspension are larger than the pores in the filter medium, they will be retained by the process commonly known as straining. However, the presence of significant straining is undesirable in deep-bed filtration, as a filter cake or mat forms, clogging the bed rapidly. This requires a considerable increase in the pressure gradient required across the filter bed to maintain the desired flow rate, and does not efficiently make use of the entire depth of the filter. However, straining may often be unavoidable in practical situations, particularly for polydisperse solutions which may contain large particles.

1.4. Attachment Mechanisms

After transport to the filter grain surface, particles are then attached to the surface of the grain by a variety of mechanisms. These mechanisms depend greatly on the chemical characteristics of the filter system, and are generally considered to be substantially more important in determining filter performance than the initial transport stages. The forces which govern the attachment of particles to the filter grain surfaces can be broadly divided into long-range forces and short-range forces, as discussed below.

1.4.1. Long-Range Forces

Long-range forces refer to those surface forces which influence particle transport and attachment at distances of up to approximately 100 nm. The primary long-range forces are listed as follows.

London – van der Waals Force

The London – van der Waals (VDW) force refers to the attraction between two closely separated surfaces, and is caused by momentary pairwise oscillations in electron density, causing the creation of instantaneous dipole moments that draw the interacting particles together. This force is mostly responsible for particle collection and adhesion; without it, hydrodynamic effects would prevent particles from reaching filter grain surfaces.

There are a multitude of expressions for the VDW force for different geometries; in deep-bed filtration, the interaction is usually assumed to occur between a sphere (the particle) and a flat plate (the filter grain, as it is many times the size of the particle and appears locally to be flat).

Broadly speaking, there are two approaches towards calculation of this force: these are Hamaker’s microscopic approach, in which the interaction is calculated by considering a pairwise summation of all intermolecular interactions; and the macroscopic approach of Lifshitz theory, which relies entirely on macroscopic electrodynamic properties of the two surfaces.

While the Lifshitz theory is more rigorous, its use has been limited by lack of electrodynamic data for particles and filter media, and complexity in formulation for practical geometries.

Thus, the Hamaker approach is almost universally used, with various corrections given to account for retardation of the VDW force (due to the finite time of propagation between bodies).

Results are normally given in terms of the interaction energy per unit area, V_A , and are tabulated below in Table 1, where H is the Hamaker constant, h is the separation distance between bodies, a_p is the particle radius, h^* is the dimensionless separation distance h/a_p , and λ' is a characteristic interaction wavelength assumed to be 100 nm. The VDW force F_A can then be calculated by the following expression:

$$F_A = \frac{-\partial V_A}{\partial h} \quad (4)$$

Expression		Notes	Source
$V_A = -H / 6h^*$	(1)	Unretarded	Hamaker

			(1937)
$V_A = \frac{-H}{6h^*} \left[\frac{1}{1+14h/\lambda'} \right]$	(2)	Retarded; valid for separations up to approximately 20% of particle diameter.	Gregory (1981)
$V_A = H[2.45\lambda'/(60\pi)\{(h-a_p)/h^2 - (h+3a_p)/(h+2a_p)^2\} - 2.17\lambda'^2/(720\pi^2)\{(h-2a_p)/h^3 - (h+4a_p)/(h+2a_p)^3\} + 0.59\lambda'^3/(5040\pi^3)\{(h-3a_p)/h^4 - (h+5a_p)/(h+2a_p)^4\}]$	(3)	Retarded; valid for separations greater than approximately 8 nm.	Czarnecki (1979)

Table 1. Approximations for London-van der Waals interaction energy derived by various researchers.

Electrical Double-Layer (EDL) Interactions

Most surfaces in an aqueous environment have surface charges, which are balanced by an equivalent amount of counter-ions present in the solution. This double layer of charge is characterized by the zeta potential, which is the electrical potential between the bulk of solution and the outer region of the double layer. The classic treatment of the interaction between two double layers was developed by Derjaguin and Landau and Verwey and Overbeek, and is known as the DLVO theory. A variety of expressions for the double-layer force F_{DL} are given in the literature; possibly the most widely used is the analytical expression of Hogg et al., given by:

$$F_{DL} = \frac{\hat{\epsilon} a_p (\zeta_p^2 + \zeta_c^2) \kappa \exp(-\kappa h)}{2(1 - \exp(-2\kappa h))} \left[2 \frac{\zeta_p \zeta_c}{\zeta_p^2 + \zeta_c^2} - \exp(-\kappa h) \right] \mathbf{n} \quad (5)$$

where $\hat{\epsilon}$ is the dielectric constant of the liquid, ζ_p and ζ_c are the zeta potentials (an approximation of the surface potential) of the particle and collector (filter grain) respectively, \mathbf{n} is the unit normal vector, and κ is the inverse Debye length, given by:

$$\kappa = \sqrt{\frac{4\pi e^2}{\hat{\epsilon} k T} \sum_j z_j^2 m_j} \quad (6)$$

where e is the charge of an electron, k is the Boltzmann constant, T is the absolute temperature, and m_j is the concentration of the j^{th} ion species present in the solution with valence z_j .

-
-
-

TO ACCESS ALL THE 46 PAGES OF THIS CHAPTER,
Visit: <http://www.eolss.net/Eolss-sampleAllChapter.aspx>

Bibliography

Bai, R. & Mackie, R. I. (1995) Modeling the Transition between Deposition Modes in Deep Bed Filtration. *Water Research*, 29, 2601-2604. [A description of techniques to link separate models for the initial and transient stages of filtration].

Bai, R. B. & Tien, C. (1996) A new correlation for the initial filter coefficient under unfavorable surface interactions. *Journal of Colloid and Interface Science*, 179, 631-634. [This presents dimensional analysis to obtain a correlation for the initial filter coefficient describing collision efficiency].

Bai, R. B. & Tien, C. (1997) Particle detachment in deep bed filtration. *Journal of Colloid and Interface Science*, 186, 307-317. [This paper examines the dependence of particle detachment on several factors by experimental methods].

Bai, R. B. & Tien, C. (2000) Transient behavior of particle deposition in granular media under various surface interactions. *Colloids and Surfaces a-Physicochemical and Engineering Aspects*, 165, 95-114. [A description of transient particle deposition by considering a variety of surface interactions].

Darby, J. L. & Lawler, D. F. (1990) Ripening in Depth Filtration - Effect of Particle-Size on Removal and Head Loss. *Environmental Science & Technology*, 24, 1069-1079. [An experimental examination of the effect of particle size on transient stage behavior].

Duval, H., Masson, D., Guillot, J. B., Schmitz, P. & D'humieres, D. (2006) Two-dimensional lattice-Boltzmann model of hydrosol depth filtration. *AIChE Journal*, 52, 39-48. [This describes the relatively novel application of lattice-Boltzmann computational fluid dynamics techniques to deep-bed filtration].

Elimelech, M. (1992) Predicting Collision Efficiencies of Colloidal Particles in Porous Media. *Water Research*, 26, 1-8. [An investigation using dimensional and experimental analysis to predict collision efficiencies].

Elimelech, M. (1994a) Effect of Particle-Size on the Kinetics of Particle Deposition under Attractive Double-Layer Interactions. *Journal of Colloid and Interface Science*, 164, 190-199. [A thorough experimental and theoretical analysis of the influence of particle size under favorable filtration conditions].

Elimelech, M. (1994b) Particle Deposition on Ideal Collectors from Dilute Flowing Suspensions - Mathematical Formulation, Numerical-Solution, and Simulations. *Separations Technology*, 4, 186-212. [A detailed mathematical treatment of a rigorous numerical solution to the C-D equation].

Elimelech, M., Gregory, J., Jia, X. & Williams, R. (1995) *Particle deposition and aggregation: measurement, modeling, and simulation*, Oxford ; Sydney, Butterworth-Heinemann. [This book presents a comprehensive and wide-ranging summary of measurement, modeling and simulation techniques for the deposition and aggregation of small particles in a range of fields. An excellent starting point for investigation of deep bed filtration theory].

Elimelech, M. & Song, L. (1992) Deposition of Colloids in Porous Media: Theory and Numerical Solution. IN Sabatini, D. A., Knox, R. C. & American Chemical Society. Division Of Colloid And Surface Chemistry. (Eds.) *ACS symposium series, 491 - Transport and remediation of subsurface contaminants : colloidal, interfacial, and surfactant phenomena*. Washington, DC, American Chemical Society. [A further presentation of a rigorous numerical solution to the C-D equation].

Gregory, J. (1981) Approximate Expressions for Retarded Vanderwaals Interaction. *Journal of Colloid and Interface Science*, 83, 138-145. [This paper presents some of the more commonly used expressions

for the van der Waals interactions which partially govern particle interactions in deep bed filtration].

Hahn, M. W., Abadzic, D. & O'melia, C. R. (2004) Aquasols: On the role of secondary minima. *Environmental Science & Technology*, 38, 5915-5924. [This paper discusses the presence of a secondary energy minimum and associated particle attachment in filtration].

Ives, K. J. (1970) Rapid filtration. *Water Research*, 4, 201-223. [A classic early summary of the mechanisms and equations governing deep bed filtration].

Jegatheesan, V. & Vigneswaran, S. (1997) The effect of concentration on the early stages of deep bed filtration of submicron particles. *Water Research*, 31, 2910-2913. [An experimental investigation of the influence of concentration on initial removal in a deep bed filter].

Jegatheesan, V. & Vigneswaran, S. (2000a) Surface coverage of filter medium in deep bed filtration: Mathematical modeling and experiments. *Separation Science and Technology*, 35, 967-987. [A theoretical and experimental investigation into the utilization of available surface area on the filter medium].

Jegatheesan, V. & Vigneswaran, S. (2000b) Transient stage deposition of submicron particles in deep bed filtration under unfavorable conditions. *Water Research*, 34, 2119-2131. [This presents experimental studies into the decline in filter efficiency caused by the blocking effect of deposited particles].

Jegatheesan, V. & Vigneswaran, S. (2005) Deep bed filtration: Mathematical models and observations. *Critical Reviews in Environmental Science and Technology*, 35, 515-569. [A summary of the mechanisms thought to govern deep bed filtration, and a critical review of the various mathematical models that have been proposed for both the initial and transient stages of filtration].

Johnson, P. R. & Elimelech, M. (1995) Dynamics of Colloid Deposition in Porous-Media - Blocking Based on Random Sequential Adsorption. *Langmuir*, 11, 801-812. [An investigation of the RSA blocking models in deep-bed filtration].

Kau, S. M. & Lawler, D. F. (1995) Dynamics of Deep-Bed Filtration - Velocity, Depth, and Media. *Journal of Environmental Engineering-Asce*, 121, 850-859. [This presents an experimental study of the effects of velocity, filter depth and media size on ripening and detachment phenomena].

Liu, D. L., Johnson, P. R. & Elimelech, M. (1995) Colloid Deposition Dynamics in Flow-through Porous-Media - Role of Electrolyte Concentration. *Environmental Science & Technology*, 29, 2963-2973. [Experimental investigations into the effect of solution ionic strength and valence on transient stage behavior].

Lu, W. M., Lai, C. C. & Hwang, K. J. (1995) Constant-Pressure Filtration of Submicron Particles. *Separations Technology*, 5, 45-53. [A trajectory analysis incorporating Brownian motion to simulate cake formation mechanisms in deep bed filtration].

Mackie, R. I. & Zhao, Q. (1999) A framework for modeling removal in the filtration of polydisperse suspensions. *Water Research*, 33, 794-806. [This presents techniques for incorporating polydisperse suspensions into existing phenomenological models].

Nelson, K. E. & Ginn, T. R. (2005) Colloid filtration theory and the Happel sphere-in-cell model revisited with direct numerical simulation of colloids. *Langmuir*, 21, 2173-2184. [This paper presents a numerical trajectory analysis incorporating Brownian effects by direct numerical simulation, which may become more feasible in future as computing power increases].

Ng, W. K., Jegatheesan, V. & Lee, S.-H. (2006) Influence of particle concentration on initial collection efficiency and surface coverage in porous media filtration. *Korean Journal of Chemical Engineering*, 23, 333-342. [An experimental study into the effect of influent concentration on initial removal efficiency and coverage of the filter medium].

O'melia, C. R. & Ali, W. (1978) Role of Retained Particles in Deep Bed Filtration. *Progress in Water Technology*, 10, 167-182. [This paper presents the derivation of the classic O'Melia-Ali model to describe transient stage filtration behavior].

Ojha, C. S. P. & Graham, N. J. D. (1992) Computer-Aided Solutions of Filtration Equations. *Water Research*, 26, 145-150. [This describes computer-based iterative methods to determine solutions to the classic phenomenological equations of filtration].

Privman, V., Frisch, H. L., Ryde, N. & Matijevic, E. (1991) Particle Adhesion in Model Systems .13.

Theory of Multilayer Deposition. *Journal of the Chemical Society-Faraday Transactions*, 87, 1371-1375. [A derivation of a model for multilayer deposition of particles in deep bed filtration].

Rajagopalan, R. & Tien, C. (2005) Comment on "Correlation equation for predicting single-collector efficiency in physicochemical filtration in saturated porous media". *Environmental Science & Technology*, 39, 5494-5495. [A response to recent empirical approaches to predict initial removal efficiency, arguing that these approaches are not necessarily superior to the existing RT equation].

Song, L. F. & Elimelech, M. (1993) Calculation of Particle Deposition Rate under Unfavorable Particle Surface Interactions. *Journal of the Chemical Society-Faraday Transactions*, 89, 3443-3452. [This describes the introduction of a new constant-migration flux boundary condition to obtain numerical solutions to the C-D equation for the case of unfavorable filtration conditions].

Spielman, L. A. & Cukor, P. M. (1973) Deposition of Non-Brownian Particles under Colloidal Forces. *Journal of Colloid and Interface Science*, 43, 51-65. [This paper presents numerical solutions to the Lagrangian trajectory equations in the absence of Brownian effects].

Spielman, L. A. & Fitzpatrick, J. A. (1973) Theory for Particle Collection under London and Gravity Forces. *Journal of Colloid and Interface Science*, 42, 607-623. [An application of the trajectory equations in the absence of EDL forces to obtain a set of expressions for the collection efficiency].

Spielman, L. A. & Friedlander, S. K. (1974) Role of Electrical Double-Layer in Particle Deposition by Convective Diffusion. *Journal of Colloid and Interface Science*, 46, 22-31. [This presents the IFBL model, in which two discrete regions are said to exist near the filter grain surface, with the hydrodynamics of the inner layer only governed by diffusion, and both convection and diffusion active within the outer layer].

Tien, C. (1989) *Granular filtration of aerosols and hydrosols*, Boston, Butterworths. [A comprehensive monograph and excellent introduction to the theory, application and modeling of deep-bed filtration processes].

Tufenkji, N. & Elimelech, M. (2004a) Correlation equation for predicting single-collector efficiency in physicochemical filtration in saturated porous media. *Environmental Science & Technology*, 38, 529-536. [An empirical analysis based on numerical solutions to the C-D equation to provide expressions for the single collector efficiency].

Tufenkji, N. & Elimelech, M. (2004b) Deviation from the classical colloid filtration theory in the presence of repulsive DLVO interactions. *Langmuir*, 20, 10818-10828. [This presents a dual deposition model which incorporates both fast and slow particle deposition due to the concurrent presence of favorable and unfavorable interactions].

Tufenkji, N. & Elimelech, M. (2005) Breakdown of colloid filtration theory: Role of the secondary energy minimum and surface charge heterogeneities. *Langmuir*, 21, 841-852. [An experimental investigation into the effect of heterogeneity of surface charge across the filter medium and the secondary energy minimum compared to classical DLVO theory].

Tung, K. L., Chang, Y. L., Lai, J. Y., Chang, C. H. & Chuang, C. J. (2004) A CFD study of the deep bed filtration mechanism for submicron/nano-particle suspension. *Water Science and Technology*, 50, 255-264. [A computational study of filter bed packing structure using trajectory analysis and the commercial software Fluent, incorporating full Brownian effects].

Vigneswaran, S. & Chang, J. S. (1989) Experimental Testing of Mathematical Models Describing the Entire Cycle of Filtration. *Water Research*, 23, 1413-1421. [This study experimentally tested the validity of two of the major transient stage models – Vigneswaran and Chang's model, and Vigneswaran and Tulachan's model].

Vigneswaran, S., Chang, J. S. & Janssens, J. G. (1990) Experimental Investigation of Size Distribution of Suspended Particles in Granular Bed Filtration. *Water Research*, 24, 927-930. [An experimental study into the effect of size distributions in influent particles, and the effect of polydisperse suspensions].

Vigneswaran, S. & Tulachan, R. K. (1988) Mathematical Modeling of Transient Behavior of Deep Bed Filtration. *Water Research*, 22, 1093-1100. [This presents one of the most successful models for transient stage behavior based on the concept of an upper limit of the number of particles that can be attached to an individual filter grain, and to attached particles].

Weronski, P. (2005) Application of the extended RSA models in studies of particle deposition at partially

covered surfaces. *Advances in Colloid and Interface Science*, 118, 1-24. [This paper presents numerical results of extended RSA models for 2D, 3D and curved trajectory analyses with application to deep bed filtration].

Whai, C. J. (1985) Mathematical modeling of deep bed filtration: microscopic approach. *Division of Environmental Engineering*. Bangkok, Thailand, Asian Institute of Technology. [This presents experimental and computational analysis of several initial and transient stage models of the filtration process].

Wnek, W. J., Gidaspow, D. & Wasan, D. T. (1975) The Role of Colloid Chemistry in Modeling Deep Bed Liquid Filtration. *Chemical Engineering Science*, 30, 1035-1047. [This presents a model for the transient stage of filtration based upon performing a charge balance on a small portion of the filter].

Yao, K. M., Habibian, M. T. & O'melia, C. R. (1971) Water and wastewater filtration: Concepts and applications. *Environmental Science and Technology*, 5, 1105. [A classic paper presenting the familiar equations for the initial collection efficiency due to a range of mechanisms – sedimentation, diffusion and interception].

Biographical Sketches

Mr. Greg Keir was born in Tully, Australia in 1984. He completed his BE (Hons) / BSc at James Cook University, Townsville, Australia (2006), majoring in environmental engineering and mathematics. He has worked as a consulting Water Resources Engineer since graduation, before recently returning to James Cook University in Townsville, Australia as a Research Officer and PhD candidate. His research interests include mathematical modeling of membrane filtration, and hydrodynamic and water quality modeling. Mr. Keir is a graduate member of the Institute of Engineers, Australia.

Dr. Veeriah Jegatheesan was born in Nawalapitiya, Sri Lanka on the 26th of May 1960. He completed his B.Sc. (Eng.) Hons. at the University of Peradeniya, Sri Lanka (1983), M.Eng. at the Asian Institute of Technology Thailand (1992), and PhD at the University of Technology Sydney, Australia (1999). He is currently an Associate Professor in Environmental Engineering at the School of Engineering of James Cook University, Townsville, Australia. Previously he has worked in the capacities of Senior Consultant, Research Associate, Measurement Engineer and Teaching Assistant. He has co-authored a book and more than 100 peer reviewed articles in the forms of journal and conference papers, book chapters and commercial-in-confidence reports. Currently he is an author of one of the scirus topic pages entitled "Resource Recovery for a Sustainable Future" (please visit http://topics.scirus.com/Resource_Recovery_for_a_Sustainable_Future.html). He is an editor for the special issue on "Present and Anticipated Demands for Natural Resources: Scientific, Technological, Political, Economic and Ethical Approaches for Sustainable Management" to be published by the /Journal of Cleaner Production/. Associate Professor Jegatheesan is a member of the editorial board of the journal, Bioresource Technology and member of the International Water Association, Australian Water Association, American Chemical Society, the Institution of Engineers Australia, European Desalination Society and the American Water Works Association.

Dr. S. Vigneswaran has been working on water and wastewater treatment and reuse related research since 1976. During the last twenty years, he has made significant contributions in physico-chemical water treatment related processes such as filtration, flocculation, membrane-filtration and adsorption. His research activities both on new processes development and mathematical modeling are well documented in reputed international journals such as Water Research, American Institute of Chemical Engineers Journal, Chemical Engineering Science, Journal of American Society of Civil Engineers, and Journal of Membrane Science. He has also been involved in a number of consulting activities in this field in Australia, Indonesia, France, Korea, and Thailand through various national and international agencies. He has authored two books in this field at the invitation of CRC press, USA, and has published more than 230 papers in journals and conference's proceedings. Currently a Professor of the Environmental Engineering Group at the University of Technology, Sydney, he was the founding Head of and the founding Co-ordinator of the University Key Research Strength Program in Water and Waste Management. He is coordinating the Urban Water Cycle and Water and Environmental Management of the newly established Research Institutes on Water and Environmental Resources Management and Nano-scale Technology respectively.